



Patients to receive sight drug, p 254



The GMC and expert witnesses, p 258



Health programmes for poor people, p 266



London's bones exhumed, p 297

EDITORIALS

- 243 **Public perception of overweight**
Underestimation has important implications for public health programmes, says Sara N Bleich
>> [Research](#), p 270
- 244 **Communication between parents and children about sex**
Could be improved by programmes in the workplace, says Douglas Kirby
>> [Research](#), p 273
- 245 **Academic achievement in twins**
Yet another twin-singleton difference is diminishing, say Kaare Christensen and Matt McGue
>> [Research](#), p 277
- 246 **Confronting therapeutic ignorance**
Tackling uncertainties about the effects of treatments will help to protect patients, says Iain Chalmers
>> [Practice](#), p 290
- 247 **Population growth and climate change**
Universal access to family planning should be the priority, say John Guillebaud and Pip Hayes

LETTERS

- 249 **Human papillomavirus vaccination; Peripheral intravenous catheters**
- 250 **Professional conduct; A discriminating judgment**

NEWS

- 251 **GP suspended after prescribing drug to help patient end life**
Report urges increase in GP sexual health service provision
- 252 **Obesity does not limit benefits of knee replacement**
US billionaires donate \$500m to reduce smoking worldwide
- 253 **First study to assess NHS costs of penetrating injury shows a total of £3m a year**
Medical schools respond to claims about stored Namibian skulls
- 254 **Partnership deal for sight drug resolves patient's challenge against trust**
Government urges businesses to join health professionals to tackle UK obesity epidemic
Study highlights risk of breaking patient confidentiality in blogs
- 255 **57 million Americans should be treated for prediabetes**
Government plans to revalidate doctors every five years

SHORT CUTS

- 256 **What's new in the other general journals**

FEATURES

- 258 **Three doctors and the GMC**
Following the collapse of a GMC case involving neonatal research that took 15 years to come to a hearing, Jonathan Gornall has uncovered a trail of incompetence and maladministration

- 262 **Acting as an expert witness**
On the day the General Medical Council publishes its guidance on acting as an expert witness, Graeme Catto, the council's president, explains the background
- 263 **Doctors in court**
Will the General Medical Council's new guidelines help allay paediatricians' fears about acting as expert witnesses? Clare Dyer reports

OBSERVATIONS

ETHICS MAN

- 264 **Clarifying best interests**
Daniel K Sokol
- WHAT'S NEW ON BMJ.COM**
- 265 **Hot topics; latest blogs; most read; recent polls**

ANALYSIS

- 266 **Social determinants of health and the design of health programmes for the poor**
Sebastian Taylor and Alireza Marandi provide examples of how health programme designs that take social, economic, political, cultural, and environmental factors into account can improve health equity, especially among the poor

RESEARCH, CLINICAL REVIEW, AND PRACTICE

 See next page

VIEWS AND REVIEWS

PERSONAL VIEW

- 296 **"Would you like to see the wound?"**
Gillian Stowell

REVIEW OF THE WEEK

- 297 **Skeletons**
Wendy Moore

COLUMNISTS

- 298 **Vive la révolution**
Des Spence
- Old whines and new battles**
Kinesh Patel

- 299 **The pleasurable unknown**
Theodore Dalrymple

MEDICAL CLASSICS

- 299 **Human Gastric Function**
Leonard Sinclair

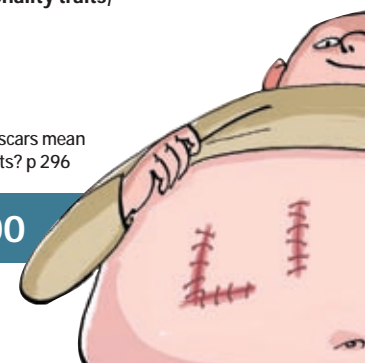
OBITUARIES

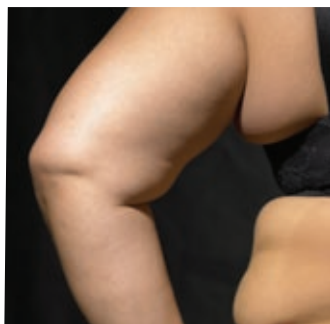
- 300 **Fyodor Grigorievich Uglov; Brian Campbell; Mary Campbell; John Gwilym Howells; Altan Kayan; Sanmugam Mahadeva; Sarah Jane Mitchell; William Bruce Robertson**

MINERVA

- 302 **Longevity and personality traits, and other stories**

What do scars mean to patients? p 296





PATRICIA DE LA ROSA/STONE/GETTY IMAGES

Changing perceptions of weight, p 270



LUDIAN NEELEMAN/FOTOLIA

Academic achievement of twins, p 277



GEOFF KIDD/SPL

Management of hypothyroidism, p 284



Fungal nail infection, p 295

RESEARCH

- 270 Changing perceptions of weight in Great Britain: comparison of two population surveys**
In 2007 fewer overweight and obese adults defined themselves as overweight than in 1999, despite a significant rise in the prevalence of raised body mass index
F Johnson, L Cooke, H Croker, Jane Wardle
[» Editorial p 243](#)
- 273 Evaluation of *Talking Parents, Healthy Teens*, a new worksite based parenting programme to promote parent-adolescent communication about sexual health: randomised controlled trial**
Set up for parents too busy to attend evening classes, this intervention significantly increased open discussion of sex within families and specific advice on condom use
Mark A Schuster, Rosalie Corona, Marc N Elliott, David E Kanouse, Karen L Eastman, Annie J Zhou, David J Klein
[» Editorial p 244](#)
- 277 Academic achievement of twins and singletons in early adulthood: Taiwanese cohort study**
Twins aged 18 did significantly worse than singletons in Chinese, mathematics, and natural science tests and had a 2.2% lower probability of attending college
Meng-Ting Tsou, Meng-Wen Tsou, Ming-Ping Wu, Jin-Tan Liu
[» Editorial p 245](#)
- 280 Gallbladder disease and use of transdermal versus oral hormone replacement therapy in postmenopausal women: prospective cohort study**
In the Million Women Study, involving more than 1.3 million UK women aged 50–69, hospital admission rates per 100 women over five years for cholecystectomy were 1.1 for women who had never used HRT, 1.3 for users of the patch or gel form of HRT, and 2.0 for oral HRT
Bette Liu, Valerie Beral, Angela Balkwill, Jane Green, Siân Sweetland, Gillian Reeves, for the Million Women Study Collaborators

CLINICAL REVIEW

- 284 Management of hypothyroidism in adults**
Bijay Vaidya, Simon H S Pearce

PRACTICE

- 290 Uncertainties Page: Should we treat subclinical hypothyroidism?**
This is the first in a series of occasional articles that highlight areas of practice where management lacks convincing supporting evidence
Cung B Pham, Allen F Shaughnessy
[» Editorial p 246](#)
- 291 Guidelines: Diagnosis and initial management of acute stroke and transient ischaemic attack: summary of NICE guidance**
This is one of a series of BMJ summaries of new guidelines, which are based on the best available evidence; they highlight important recommendations for clinical practice, especially where uncertainty or controversy exists
Sharon Swain, Claire Turner, Pippa Tyrrell, Anthony Rudd, on behalf of the Guideline Development Group
- 294 Commentary: Controversies in NICE guidance on acute stroke and transient ischaemic attack**
Helen Rodgers, Mark Sudlow
- 295 10-Minute Consultation: Fungal nail infection**
This is part of a series of occasional articles on common problems in primary care
Tim Colde Hartman, Eric van Rijswijk

RESEARCH PUBLISHED ONLINE

Effect of integration of supplemental nutrition with public health programmes in pregnancy and early childhood on cardiovascular risk in rural Indian adolescents: long term follow-up of Hyderabad nutrition trial

BMJ 2008;337:a605, doi: 10.1136/bmj.a605

Sanjay Kinra, K V Rameshwar Sarma, Ghafoorunissa, Vishnu Vardhana Rao Mendu, Radhakrishnan Ravikumar, Viswanthan Mohan, Ian B Wilkinson, John R Cockcroft, George Davey Smith, Yoav Ben-Shlomo

The Editor, BMJ

BMA House, Tavistock Square,
London WC1H 9JR

Email: editor@bmj.com

Tel: +44 (0)20 7387 4499

Fax: +44 (0)20 7383 6418

BMA MEMBERS' INQUIRIES

Email: membership@bma.org.uk

Tel: +44 (0)20 7383 6642

BMJ CAREERS ADVERTISING

Email: sales@bmjcareers.com

Tel: +44 (0)20 7383 6531

DISPLAY ADVERTISING

Email: sales@bmjgroup.com

Tel: +44 (0)20 7383 6350

REPRINTS

UK/Rest of world

Email: ngurneyrandall@bmjgroup.com

Tel: +44 (0)20 8445 5825

USA

Email: mfogler@medicalreprints.com

Tel: +1 (856) 489 4446

SUBSCRIPTIONS

BMA Members

Email: membership@bma.org.uk

Tel: +44 (0)20 7383 6642

Non-BMA Members

Email: subscriptions@bmjgroup.com

Tel: +44 (0)20 7383 6270

OTHER RESOURCES

For all other contacts:

resources.bmj.com/bmj/contact-us

For advice to authors:

resources.bmj.com/bmj/authors

To submit an article:

submit.bmj.com

The BMJ is published by BMJ Publishing Group Ltd, a wholly owned subsidiary of the British Medical Association.

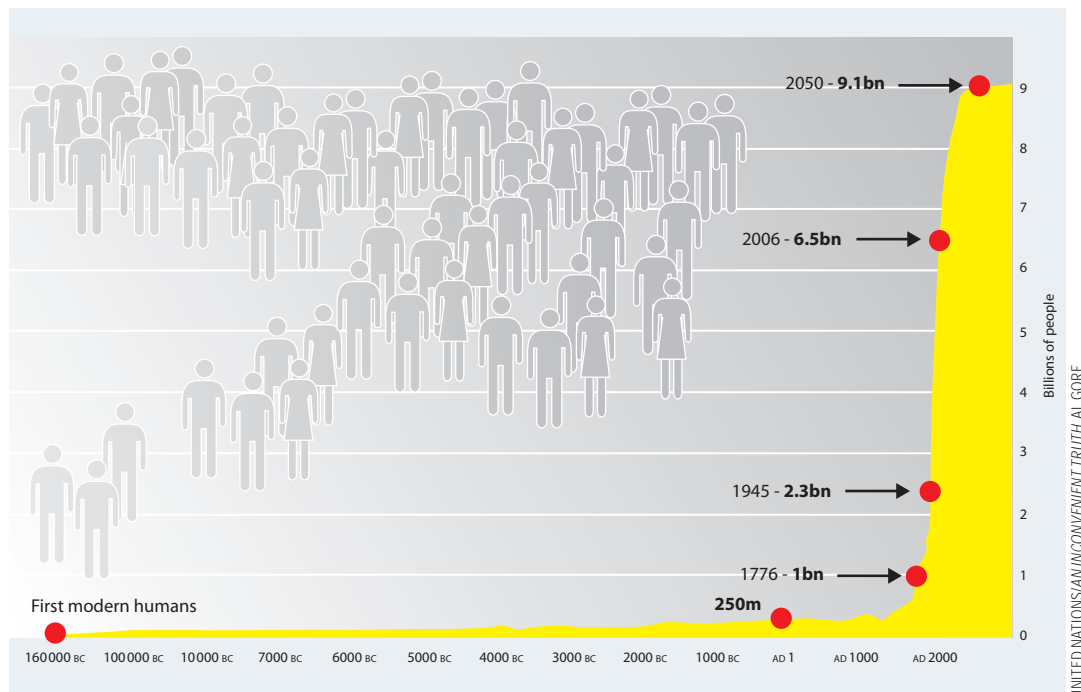
The BMA grants editorial freedom to the Editor of the BMJ. The views expressed in the journal are those of the authors and may not necessarily comply with BMA policy. The BMJ follows guidelines on editorial independence produced by the World Association of Medical Editors (www.wame.org/wamestmt.htm#independence) and the code on good publication practice produced by the Committee on Publication Ethics (www.publicationethics.org.uk/guidelines/).

The BMJ is intended for medical professionals and is provided without warranty, express or implied. Statements in the journal are the responsibility of their authors and advertisers and not authors' institutions, the BMJ Publishing Group, or the BMA unless otherwise specified or determined by law. Acceptance of advertising does not imply endorsement.

To the fullest extent permitted by law, the BMJ Publishing Group shall not be liable for any loss, injury, or damage resulting from the use of the BMJ or any information in it whether based on contract, tort, or otherwise. Readers are advised to verify any information they choose to rely on.

© BMJ Publishing Group Ltd 2008
All Rights Reserved. No part of this publication may be reproduced, stored in a retrieval system, or transmitted in any form or by any other means, electronic, mechanical, photocopying, recording, or otherwise, without prior permission, in writing, of the BMJ

Published weekly. US periodicals class postage paid at Rahway, NJ. Postmaster: send address changes to BMJ, c/o Mercury Airfreight International Ltd Inc, 365 Blair Road, Avenel, NJ 07001, USA. \$796. Weekly
Printed by Precision Colour Printing Limited



PICTURE OF THE WEEK

Population growth throughout history: world population has quadrupled in less than 100 years. The annual increase in population of about 79 million means that every week an extra 1.5 million people need food and somewhere to live. Every person born adds to greenhouse gas emissions, and escaping poverty is impossible without these emissions increasing. Resourcing contraception therefore helps to combat climate change. (See Editorials, p 247.)

THE WEEK IN NUMBERS

57 million Estimated number of US residents who have prediabetes (News p 255)

1 Number of cholecystectomies that could be avoided for every 140 postmenopausal women who use transdermal rather than oral hormone replacement therapy over five years (Research p 280)

3.5 per 1000 Annual incidence of primary hypothyroidism in women in the UK— in men it is 0.6 per 1000 (Clinical Review p 284)

£7bn Estimated cost of stroke to the economy in England (Practice p 291)

THE WEEK IN QUOTES

“Although the cost of penetrating trauma resulting from shooting is higher than from stabbing, the most commonly used weapon in violent crime in England and Wales is actually a knife” (News p 253)

“The trick is not to put ourselves in the patient’s shoes, but to imagine what it is like for the patient to be in his or her shoes” (Observations p 264)

“As the proportion of overweight people in Great Britain has increased, the ability of overweight individuals to “self diagnose” their weight problem has declined” (Research p 270)

“Please stop urinating in the corridor, sir” (Starting Out p 298)

